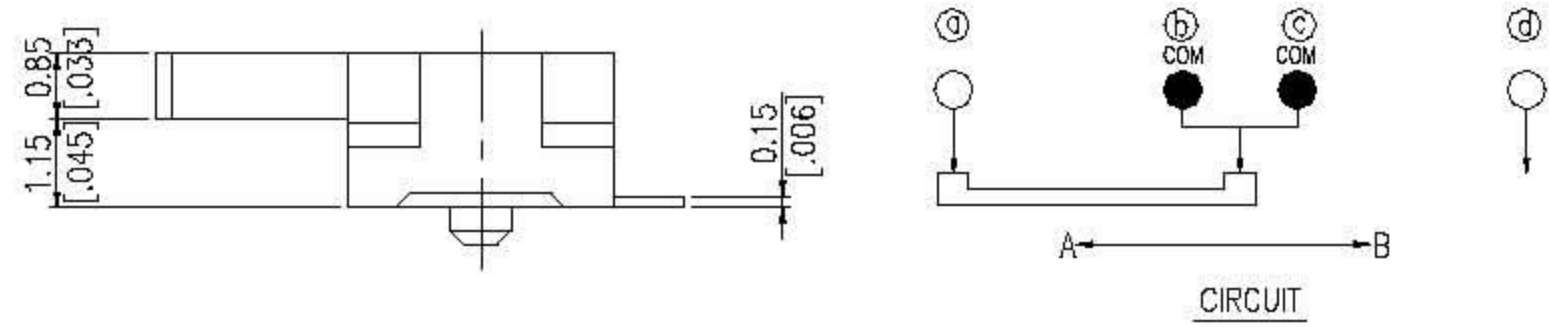
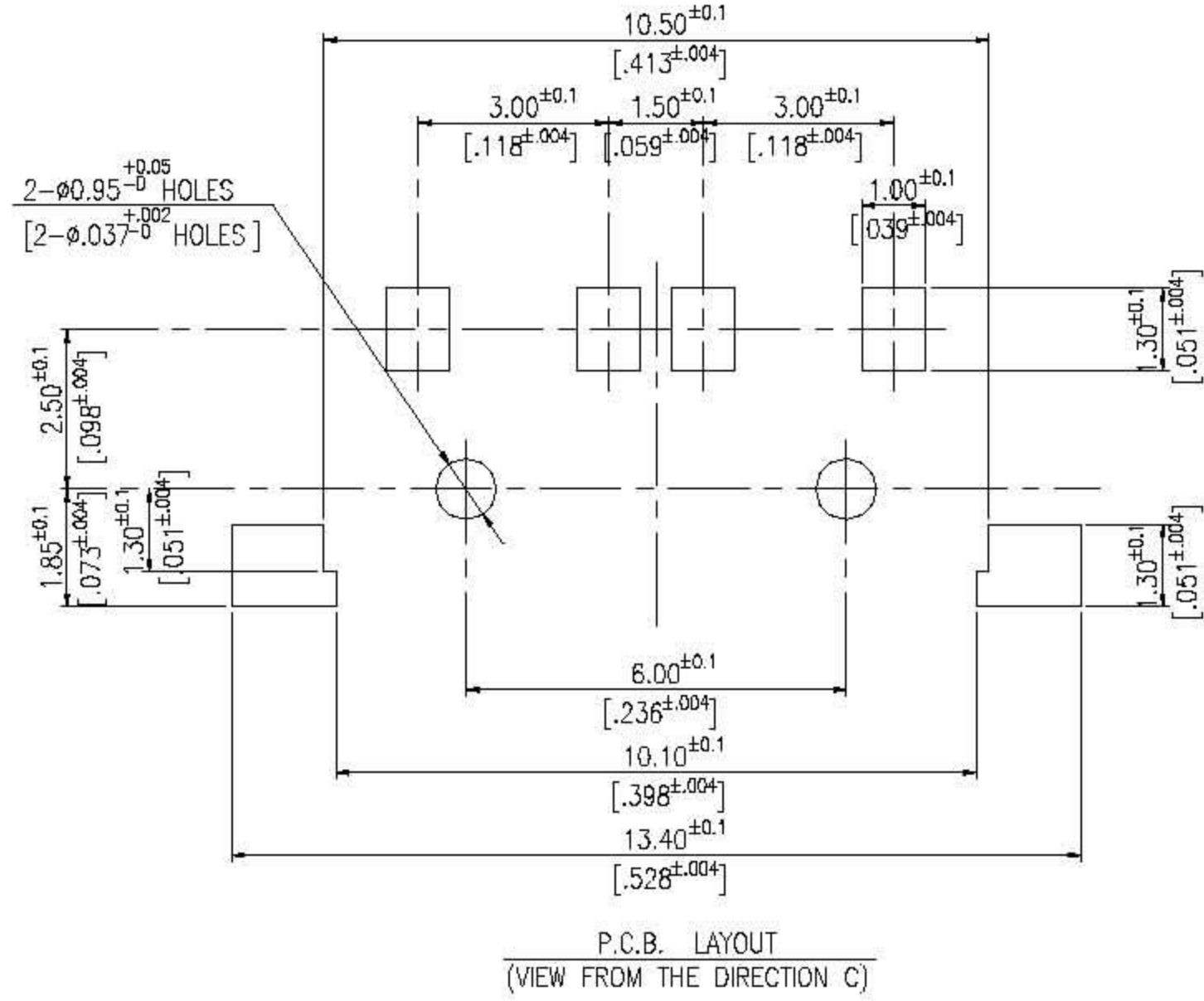
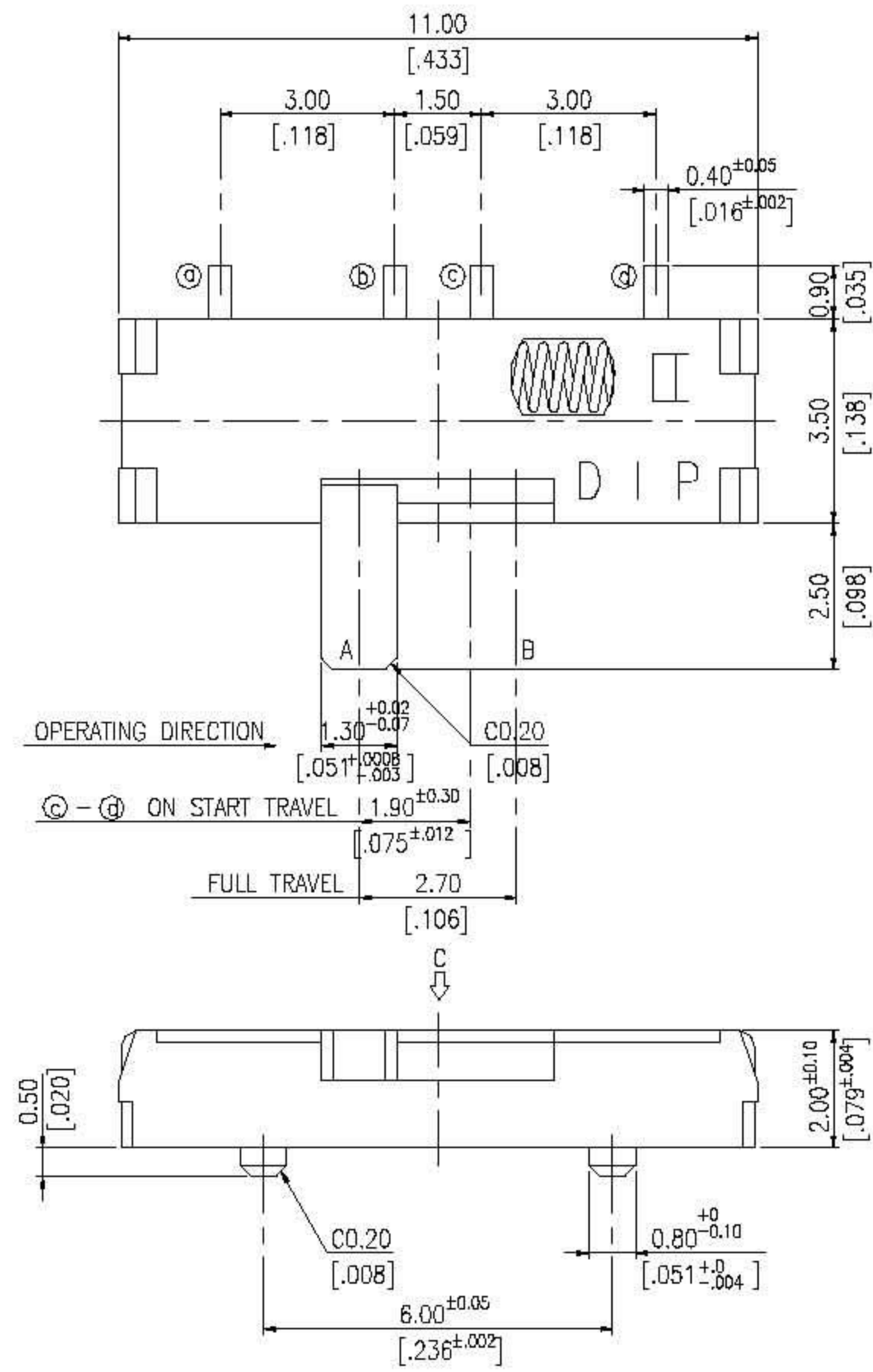


# SSS SERIES



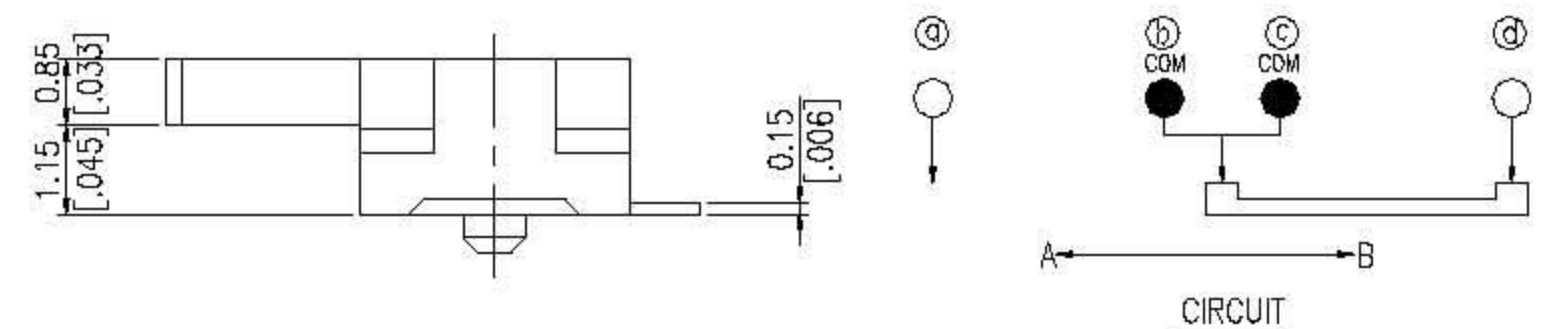
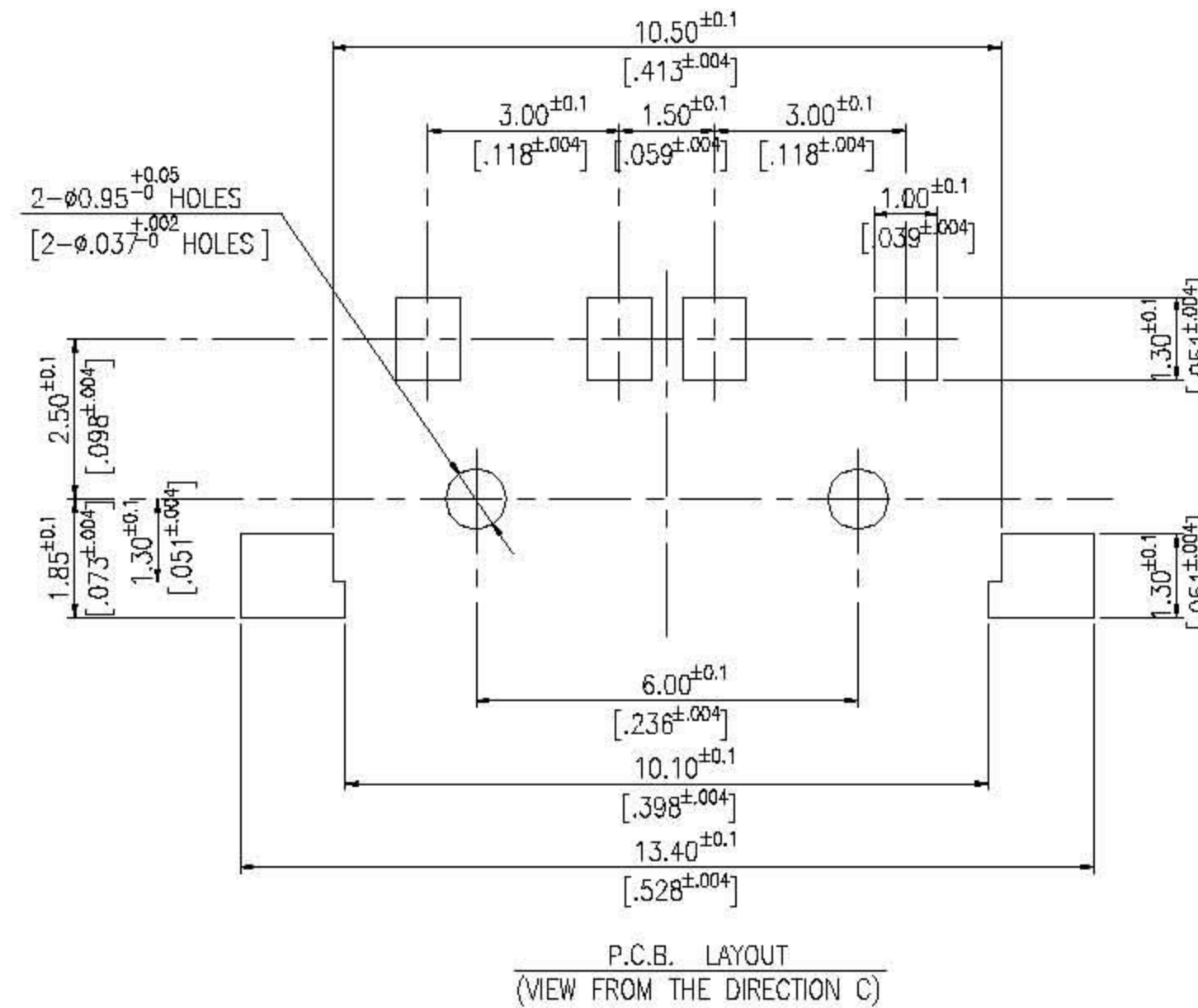
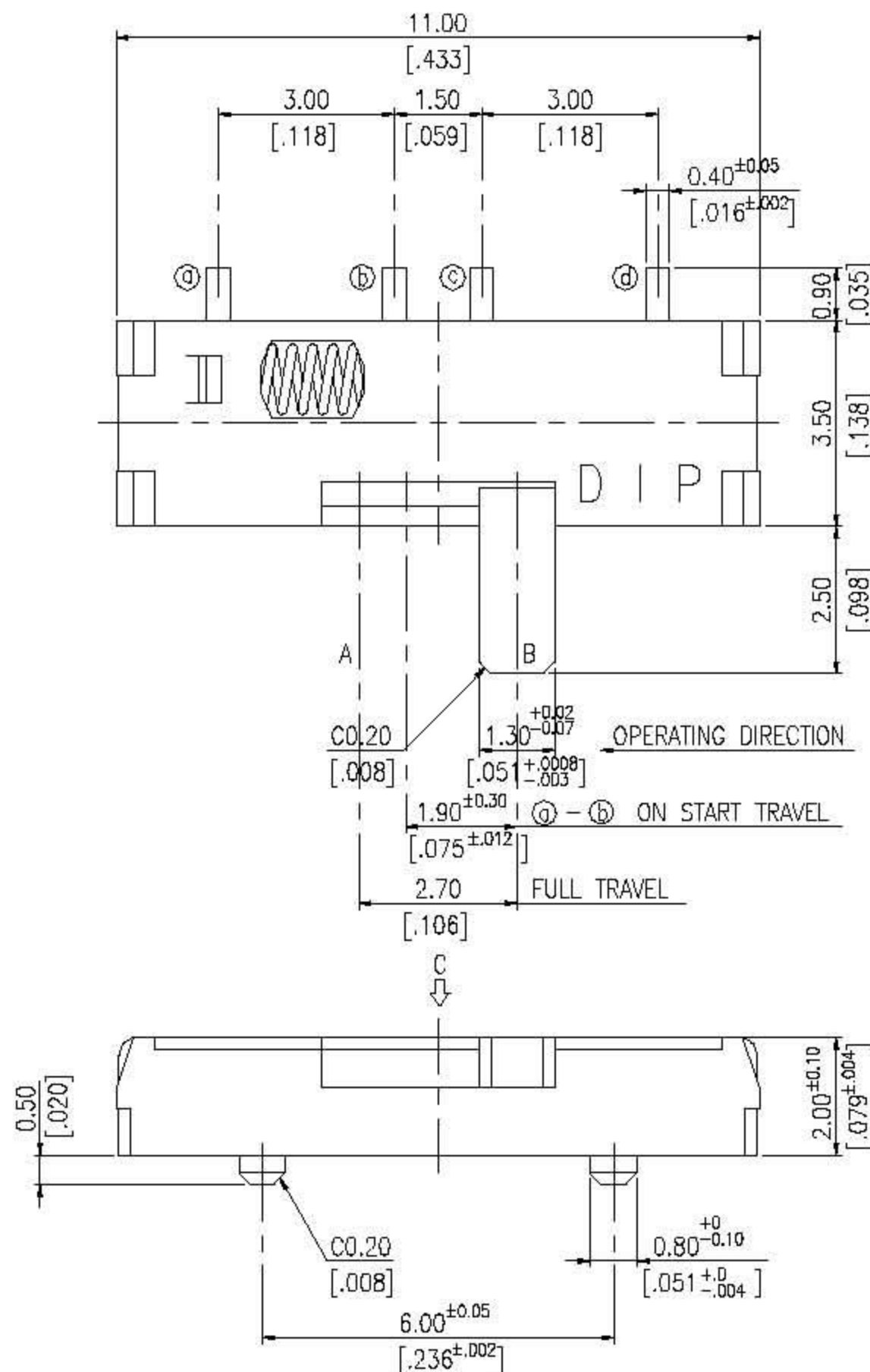
## DIMENSION

### SS12L



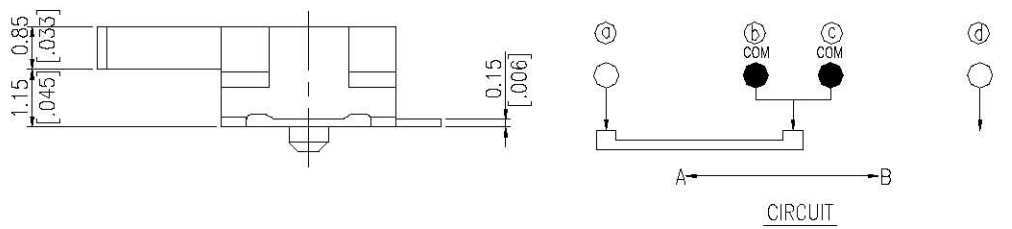
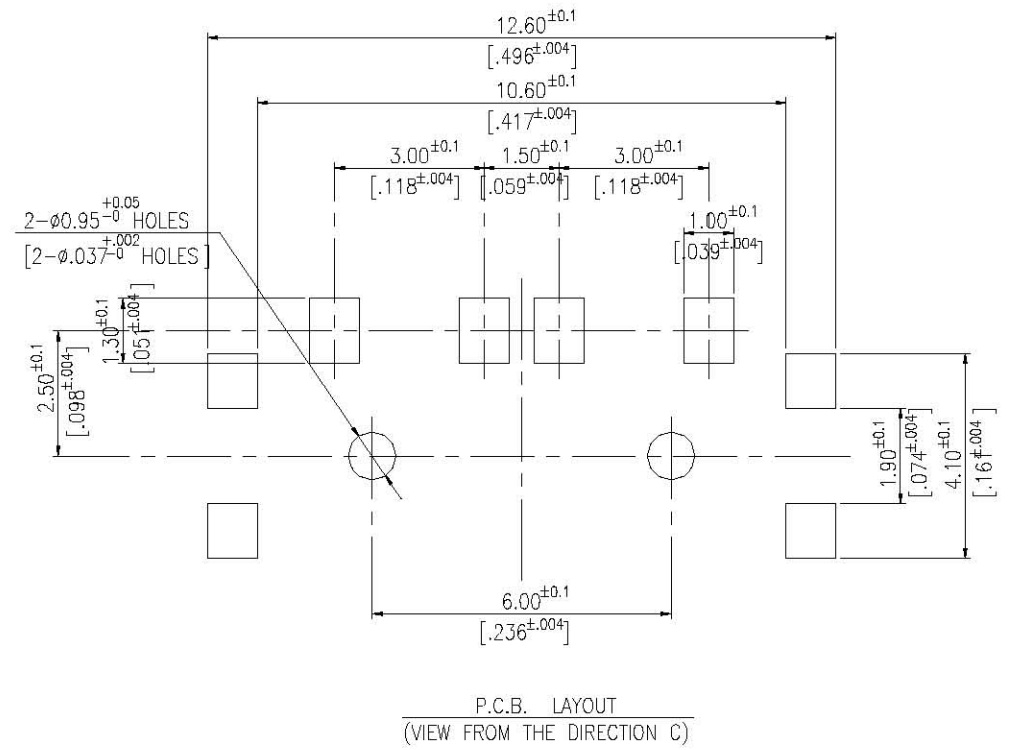
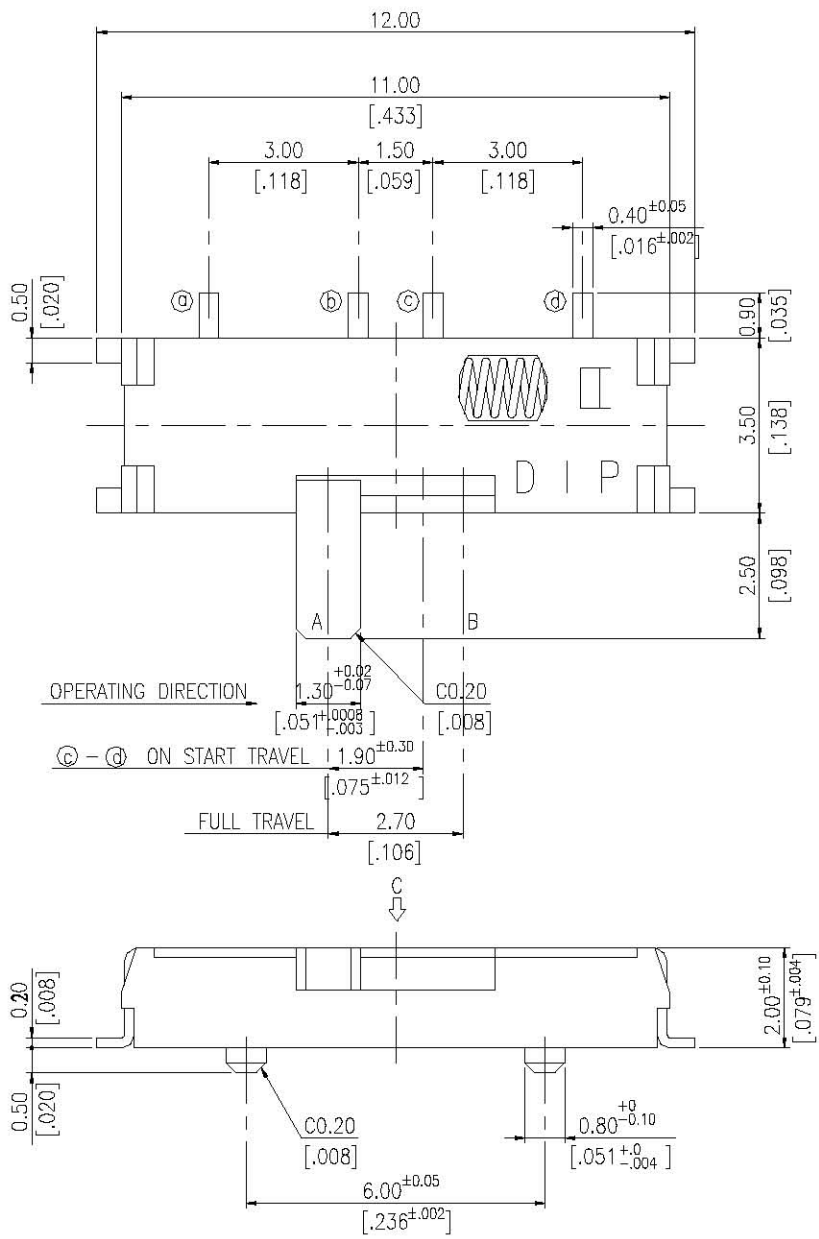
General Tolerance :  $\pm 0.2\text{mm}$

### SSS12R



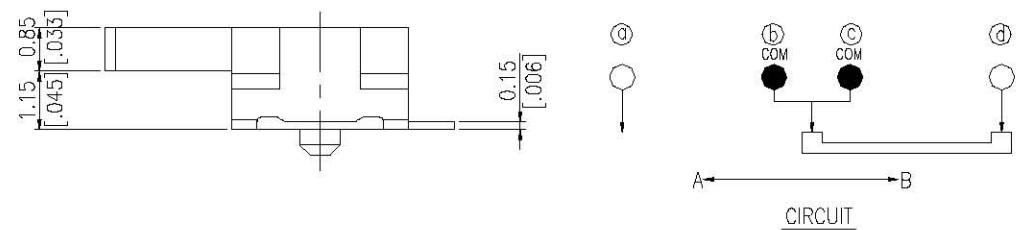
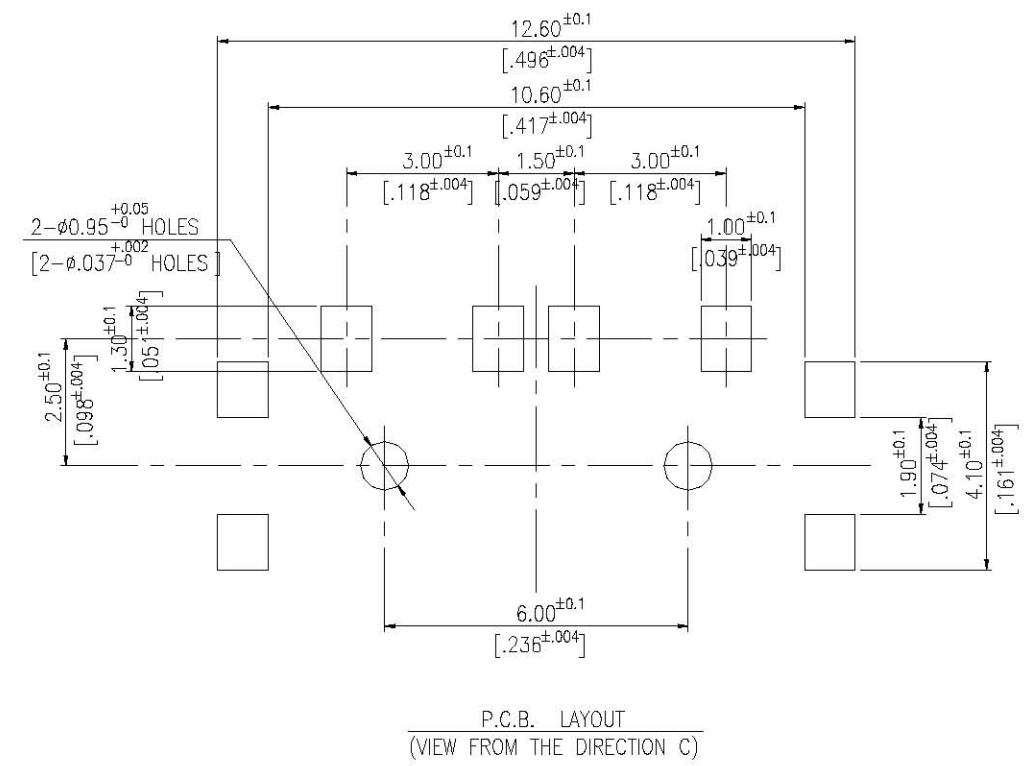
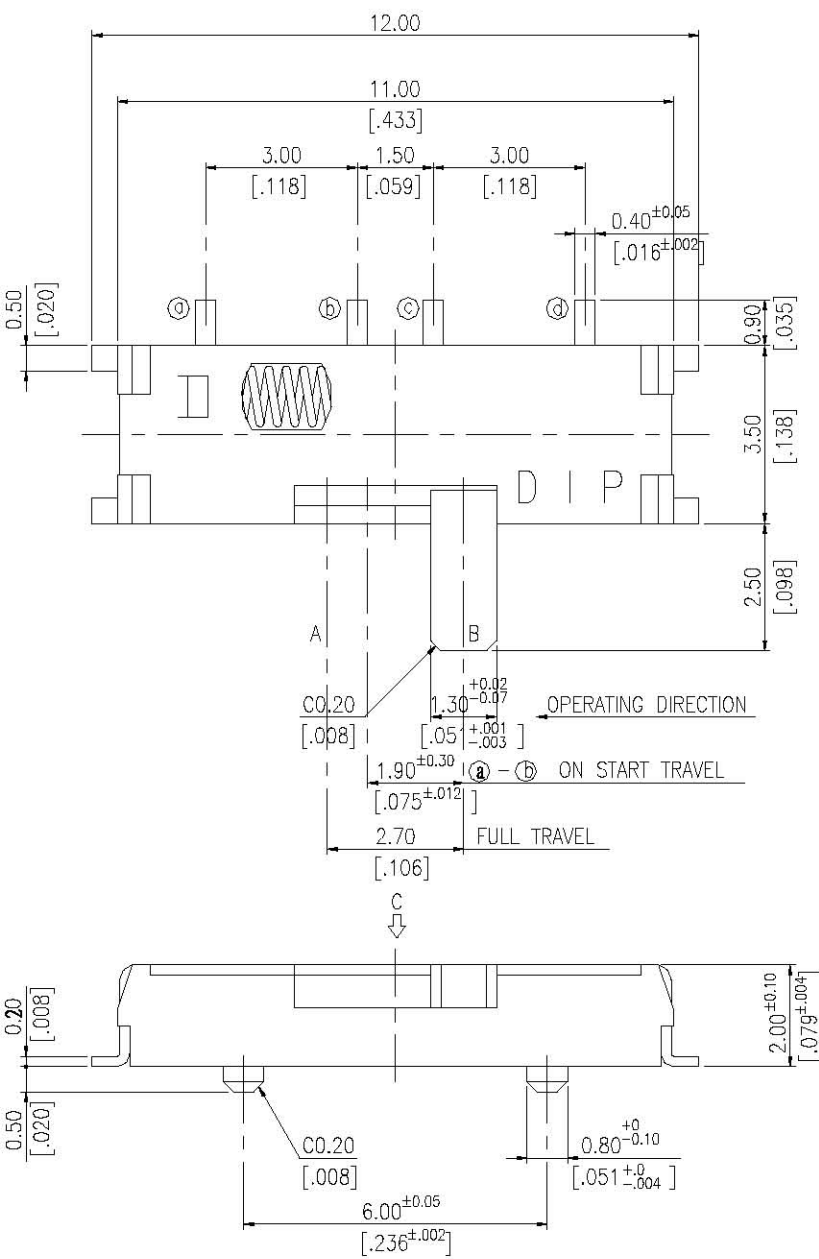
General Tolerance :  $\pm 0.2\text{mm}$

**SSS12LG**



General Tolerance :  $\pm 0.2\text{mm}$

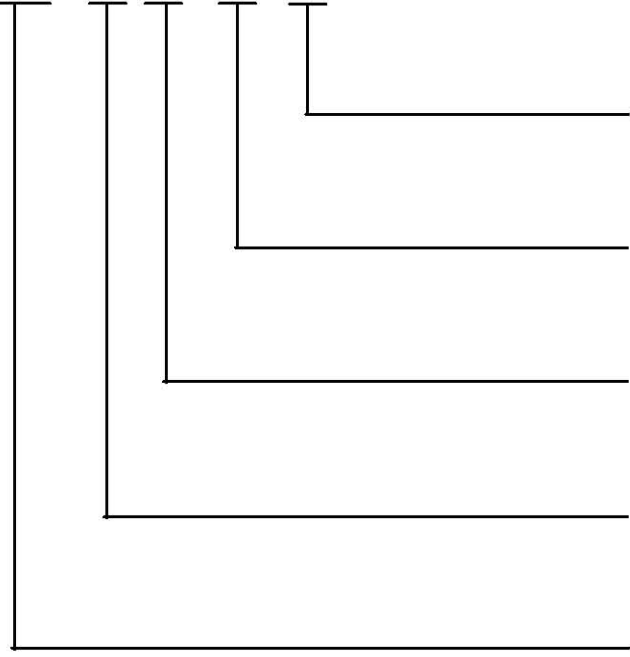
**SSS12RG**



General Tolerance :  $\pm 0.2\text{mm}$

## HOW TO ORDER

SSS - 12 □ - V - □



Package :  
T/R = Tape & Reel

Soldering :  
V = Lead Free Solderable

L = Actuator in Left Side  
R = Actuator in Right Side

Poles-Positions  
12 = 1P2T

Spring Return Slide Switch

## SPECIFICATION

### △MECHANICAL

Operation Force :  $180 \pm 70$ gf  
Operation Temperature Range :  $-10^{\circ}\text{C}$  to  $+60^{\circ}\text{C}$   
Storage Temperature Range :  $-20^{\circ}\text{C}$  to  $+75^{\circ}\text{C}$

### △ELECTRICAL

Electrical Life : 10,000 cycles  
Rating : 25mA, 24V DC  
Contact Resistance :  $70\text{m}\Omega$  max.  
Insulation Resistance :  $100\text{M}\Omega$  min. at 100V DC  
Dielectric Strength : 100V AC/1 minute  
Circuit : 1P2T

## MATERIAL

△STEM : UL94V-0 High-Temp Thermoplastic

Color : Black

△COVER : Nickel silver

△SPRING : Stainless silver

△CONTACT : Alloy Copper, Gold Plated

△BASE : LCP High-Temp Thermoplastic

Color : Black

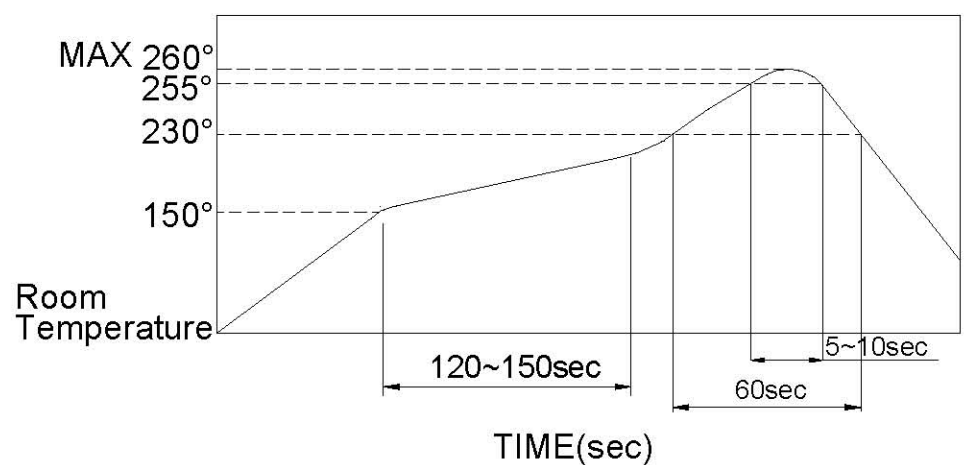
△TERMINAL : Phosphor Bronze, with Silver plated

## SOLDERING PROCESS

△HAND SOLDERING : Use a soldering iron of 30 watts,  
Controlled at  $350^{\circ}\text{C}$  approximately 5 seconds while  
applying solder.

△REFLOW SOLDERING : When applying reflow soldering,  
the peak temperature of the reflow oven should be set  
to  $260^{\circ}\text{C}$  max.

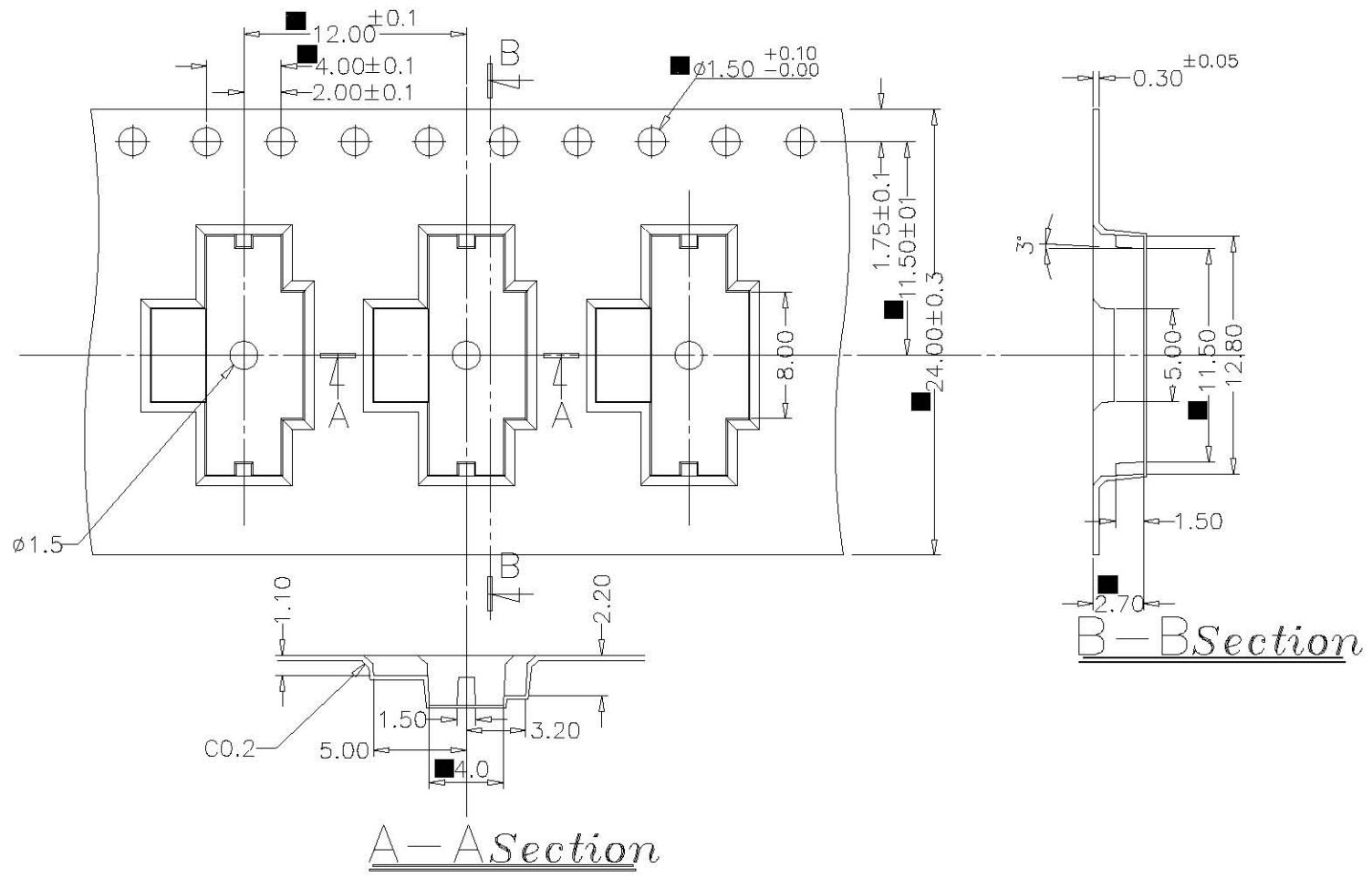
△Temperature Profile :



# PACKING

REEL

Part Number	Number Per Tube	Number Per Reel
SSS-12R(G)	-	2000
SSS-12L(G)	-	2000



General Tolerance :  $\pm 0.1\text{mm}$